

WUNDERKAMMER

Windows of curiosity, oddity and theatrical invention 23-30 June 2019.
Curated by Sarah Amazinnia & Holly Cunningham



Hannah Beehre Westerlund 2
Swarovski® crystals, acrylic and dye
on silk velvet. 2017

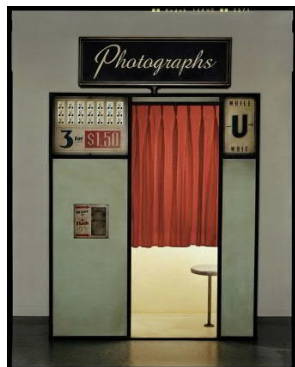
An immersive dreamscape,
transporting the viewer to distant
regions of our galaxy.
Signal Box Norwich Quay
Sunrise – late.



Lucy Dolan-Kang Winter Solstice

A Super hand painted work on glass
in celebration of Winter Solstice.

Super 15 Norwich Quay
Daily 9am – late.



Rebecca Lovell-Smith & Christian
Carruthers Photo Booth

A cabinet of wonder including
photographs of the community
taken from their photo box over the
years.

12 Oxford St
Daily 24hrs



Sarah Amazinnia Flora and Fauna

Treasured curios from around
Lyttelton- a mash up of tastes,
textures and trophies.

53 Oxford Street
Daily 24hrs





Shay Horay The Cardboard Confessional

Come one, come all. The faith is in 4 ply. All welcome, be you scruncher or folder. The Port Pastor is at Civil & Naval with a not so civil service. It's a free public confessional situated in the very public bathroom. Civil & Naval 16 London St The Pastor will be going through the motions daily between 5-7pm.



Sam Allison, Jack Ballard, Bonnie Gosnell The Cardboard Clientele

Don't stay "Home Alone" all winter. Business magnate and local mogul Louis Dyer has Macaulay Cukined up a solution, Find a friend at Civil & Naval. The cardboard crony. The corflute cohort. The craft paper companion. Be a recycled regular and join our paper playmates. Civil & Naval 16 London St Daily 10am – late.



Nick Lowry Live Painting

Three giant windows will be evolving in hyper colour with a fluid approach over the week drawing inspiration from the local peninsula environment.

SuperValue 17 London St Daily 24hrs



Debra McLeod Beauty in the Beast

200 resin shrimp form a kaleidoscope of reflected light from their lit surroundings.

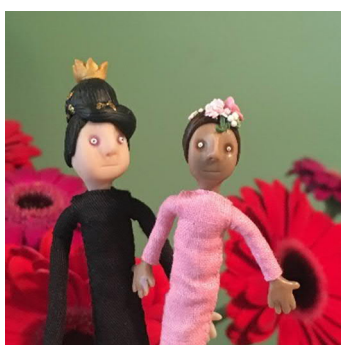
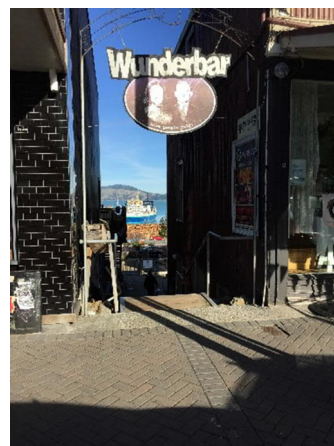
Eruption Brewery 26 London St Daily 24hrs





AC Hunter & Mary-ann Thorne
Behind closed doors // on display
This piece is about queerness.
Trans-Tasman migratory patterns.
About home.
About places you feel safe to be yourself.
About the armour you put on when you walk out the door.
Keep Lyttelton weird.

Down the stairwell next to Henry Trading 33 London St
Daily 24hrs



Ellen Henry Miniature Figurines

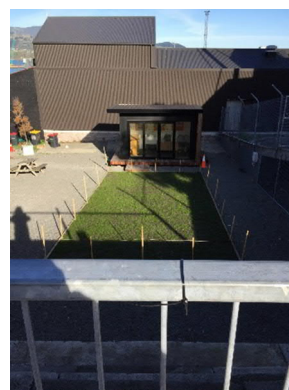
Sweet and spookily intricate little folk made from polymer clay, wire and fabric.

Henry Trading 33 London St
Daily 24hrs



Toi Āmai: Who Built the Red Rock Walls?

A multi-discipline creative collective working in the spirit of peace and protest. Digging deeper into our past by asking the question "Who Built the Red Rock Walls?"
Lyttelton Museum 35 London St
Onsite 10am – evening daily.
107.7FM Rotten Radio live to airs from 7pm daily & Fires on the 23rd (opening night), 25th (at dawn), 30th (closing night).

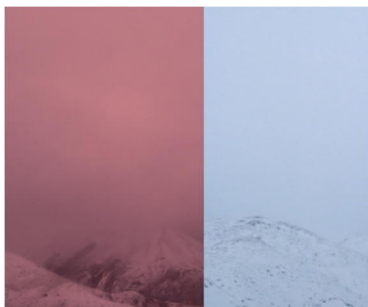


Jo Drysdall Stained Glass

Feathered locals explore a cabinet of curiosities and find treasures to their liking.

Lyttelton Library
Cnr London & Canterbury St
Illuminated after dark - 10pm





Emma Wallbanks "SEARCH and DESTROY"
Double channel projection,
dimensions variable 10:53 looped.

A visual poem about a lone traveller.
With one eye looking back, and the
other forward.
The Loons 16 Canterbury St
Daily 5pm – 10pm



Debra Mcleod "Welcome to my World"

Vacuum formed impression of the
artist's face, wool & LED lights.
A self-portrait of an internal world.

The Stables 22 Canterbury St
Daily 5pm-10pm



Thanks guys!

